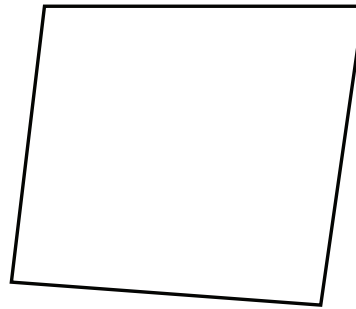




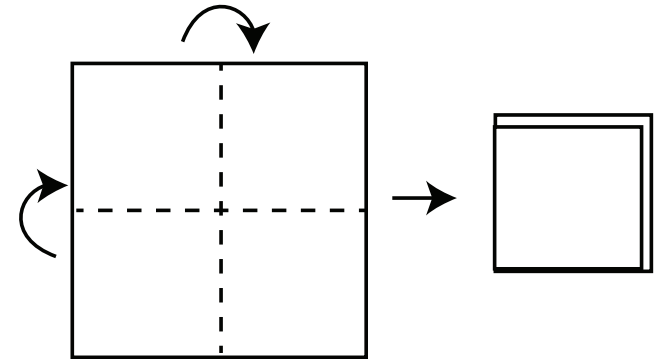
Jillyhop Studios

Supplies needed:
 - paper
 - cord for each flower

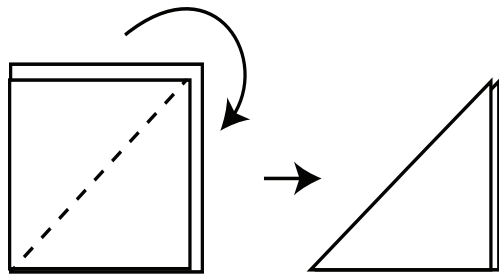
1. imperfectly cut out paper a bit over 1.5 inch square



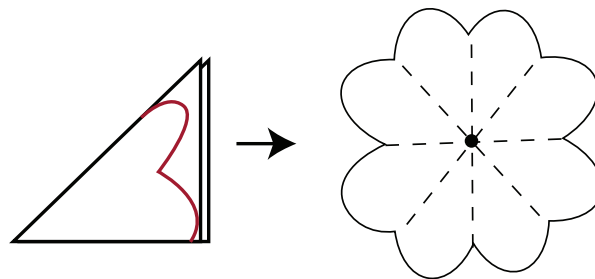
2. fold in half .
 3. fold in half again



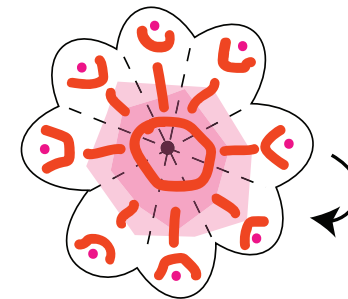
4. fold in half one more time



5. Cut heart shape on outer edge
 6. Snip tiny bit off on point end to create hole for flower stem



7. Open and decorate with available supplies (markers, paints, crayons, etc.)



8. Fold over one quarter to make a cup shape. See video.

9. knot cord and pull through hole.